

328D LCR

Hydraulic Excavator for Tunneling



Features

Cat® C7 Engine with ACERT™ Technology.

It controls the combustion process to reduce pollutant levels maintaining performance and efficiency.

Net power 140 kW, 6 cylinders, 7.2 liter displacement, EU Stage IIIA emission compliant.

Compact Tail Swing Radius. 1900 mm vs. 3080 mm on the standard 325D L. Front swing radius 3400 mm.

Heavy Duty Dozer Blade. For additional stability and real dozer job, 3180 mm wide.

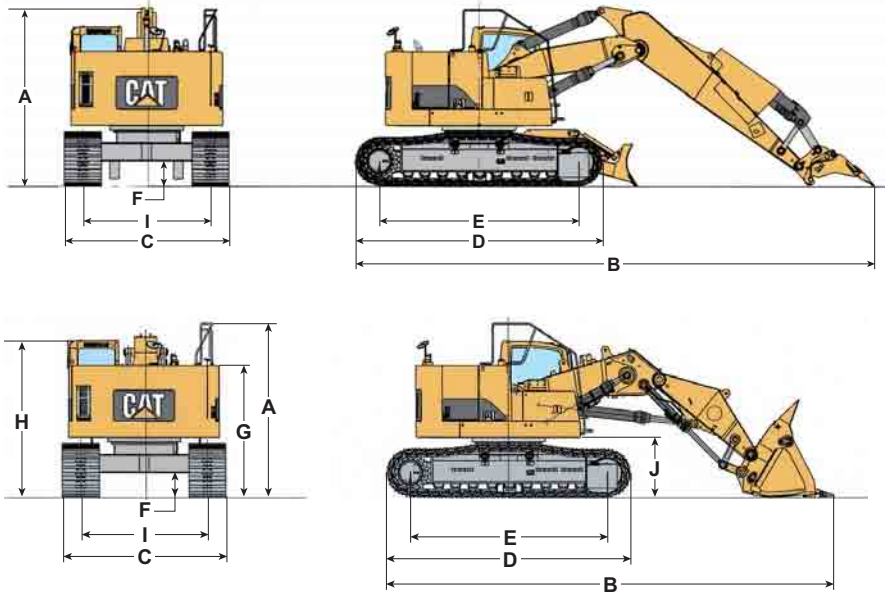
New Cab. Increased upper visibility with narrow front pillar. Provides maximum space and easy access to switches.

Boom, Sticks and Linkage. Front shovel and 3200 mm boom with two sticks are available to suit a variety of application conditions.

Service and Maintenance. Fast, easy service with extended service intervals, advanced filtration, convenient filter access and user-friendly electronic diagnostics for increased productivity and reduced maintenance costs.

CATERPILLAR®

328D LCR Specifications

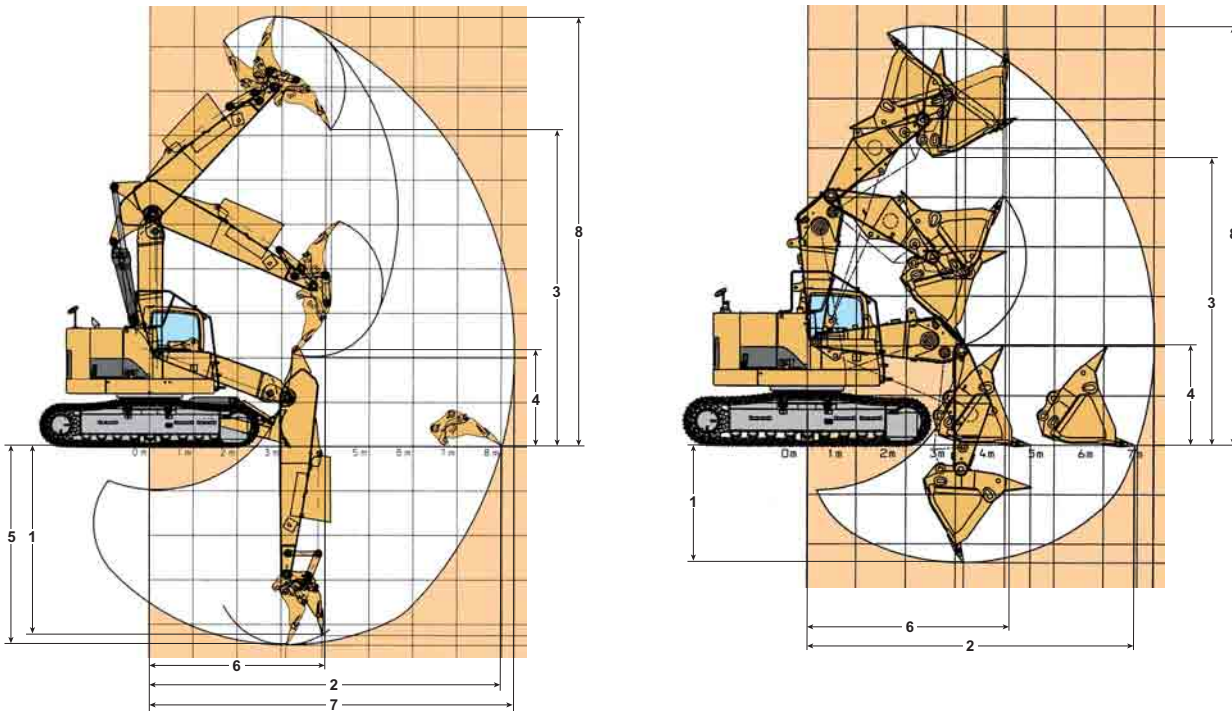


Dimensions

mm

| | |
|--|--------|
| A Shipping height with 3200 mm boom | |
| 4000 mm stick | 3565 |
| 2500 mm stick with Front Shovel | 3538 |
| B Shipping length with 3200 mm boom | |
| 4000 mm stick | 10 543 |
| 2500 mm stick with Front Shovel | 9103 |
| C Shipping width (700 mm shoes) | 3290 |
| D Track length | 5021 |
| E Length to centers of rollers | 4040 |
| F Ground clearance | 508 |
| G Body height | 2688 |
| H Cab height | 3185 |
| I Track gauge | 2590 |
| J Counterweight clearance | 1227 |

Working Ranges



| | | 3200 mm Boom* | | Front Shovel** |
|--|----|---------------|------|----------------|
| Stick length | mm | 4000 | 2500 | — |
| 1 Maximum digging depth | mm | 4480 | 2980 | 2380 |
| 2 Maximum reach at ground level | mm | 8030 | 6590 | 6690 |
| 3 Maximum loading height | mm | 7110 | 5890 | 5860 |
| 4 Minimum loading height | mm | 2020 | 2770 | 2020 |
| 5 Maximum vertical wall digging depth | mm | 4250 | 2720 | — |
| 6 Minimum front swing radius | mm | 4120 | 2710 | 3950 |
| 7 Maximum reach | mm | 8300 | 6920 | — |
| 8 Maximum cutting height | mm | 9670 | 8600 | 8440 |

* with ripper

** with 2.3 m³ bottom dump bucket

328D LCR Hydraulic Excavator for Tunneling



Engine

Horsepower (hp) are metric

| | |
|----------------------|-----------------|
| Engine model | Cat C7 ACERT |
| Net power (ISO 9249) | 140 kW (190 hp) |
| Maximum travel speed | 4.1 km/h |

Operating Weights

| | |
|---|-----------|
| With 3200 mm boom and 3180 mm dozer blade | |
| with 4000 mm stick | 38 430 kg |
| with 2500 mm stick | 38 200 kg |
| Front shovel | 35 000 kg |
| with bottom dump bucket | 37 900 kg |

Standard Equipment

Electrical

- Alternator, 65 A
- Base machine light (frame)
- Horn
- Pre-start monitoring system – checks for low fluids (engine oil, coolant, hydraulic oil) prior to starting machine

Operator Environment

- Instrument panel gauges
- Joysticks, console mounted, pilot operated
- Monitor, full graphic color display
- Neutral lever (lock out) for all controls
- Travel control pedals with removable hand levers

Engine/Power Train

- Cat C7 ACERT
- Air intake heater
- Air-to-air aftercooler (ATAAC)
- 24 V electric starting
- Hydraulic electronic unit injectors (HEUI)
- 2300 m altitude capability without derate
- Automatic engine speed control with one touch low idle
- Cooling
- Protection of 43°C to –18°C at 50% concentration

Hydraulic System

| | |
|--|-----------|
| Main implement system – max. flow (2x) | 235 L/min |
| Max. pressure | |
| Equipment | 350 bar |
| Heavy | 360 bar |
| Travel | 350 bar |
| Swing | 275 bar |

- Electric priming pump
- Straight line travel
- Two speed auto-shift travel
- Water separator in fuel line
- Water level indicator for water separator

Undercarriage

- Grease lubricated track
- Heavy-duty rollers
- Hydraulic track adjusters
- Idler and center section track guards

Other Standard Equipment

- Automatic swing parking brake
- Auxiliary hydraulic valve
- Capability of stackable valves (max of 2) for main valve
- Capability of auxiliary circuit
- Counterweight, 7720 kg
- Door locks, cap locks and Caterpillar one key security system
- Fine swing control
- Fully pressurized hydraulic system
- Mirrors (upper frame, rear)
- S•O•SSM quick sampling valves for engine and hydraulic oil
- Wiring provision for Product Link

328D LCR Hydraulic Excavator for Tunneling

For more complete information on Cat products, dealer services, and industry solutions, visit us on the web at www.cat.com

HEHH3629 (04/2007) hr

© 2007 Caterpillar -- All Rights Reserved

Materials and specifications are subject to change without notice. Featured machines in photos may include additional equipment. See your Caterpillar dealer for available options.

CAT, CATERPILLAR, their respective logos, "Caterpillar Yellow" and the POWER EDGE™ trade dress, as well as corporate and product identity used herein, are trademarks of Caterpillar and may not be used without permission.

CATERPILLAR®
TODAY'S WORK. TOMORROW'S WORLD.™