



GSH9B, GSH15B, GSH20B, GSH22B

Orange Peel Grapples for Hydraulic Excavators

Features

New Design

Wide range of applications

Maintenance

Options available

Benefits

The new design of the orange peel grapples ensures maximum protection of the hydraulics through integration of the hydraulics cylinders into the tines and through the protection guard that protects the hydraulic couplers and lines from damaging to lower your operating costs.

These grapples can be used for a wide range of applications such as handling shredded scrap, long structural beams or car bodies, or for handling waste at recycling and transfer stations plants as well as handling rocks at construction sites.

Easily accessible lubrication points, hydraulic components are easily accessible behind covering guards. Made of durable wear-resistant materials.

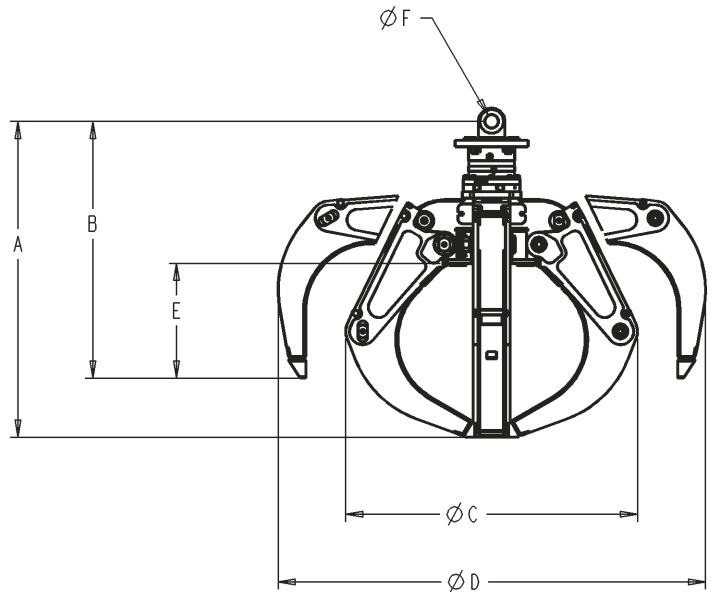
Choice of open, semi-closed and closed shells.

Orange Peel Grapples for Hydraulic Excavators

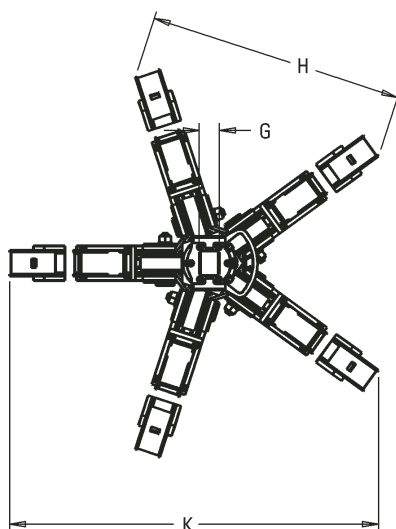
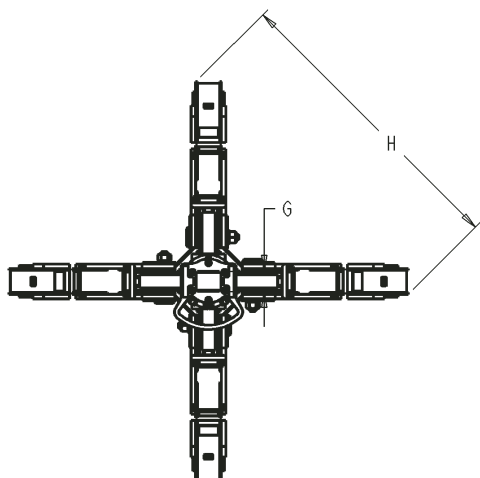
Specifications and Dimensions

		GSH9B				GSH15B				
		4 Tines		5 Tines		4 Tines				
Type/Capacity	Liter	300	400	300	400	400	500	600	800	400
Recommended carrier weight										
Excavator class	metric tons	9-15		9-15		15-21				
Material Handler class	metric tons	9-18		9-18		18-25				
Operating weight*										
open	kg	530	540	630	640	1080	1090	1100	1130	1300
semi-closed	kg	570	580	670	690	1150	1160	1180	1230	1370
closed	kg	660	690	730	760	1280	1300	1340	1430	1460
Maximum lifting capacity	kg	3000		3000		4000				
Hydraulic open/close										
Maximum pressure	bar	350		350		350				
Optimum Flow	l/min	80		80		100				
Hydraulic rotation										
Maximum pressure	bar	320		320		320				
Optimum Flow	l/min	40		40		40				
A Height – tines closed	mm	1370	1460	1370	1460	1660	1700	1750	1890	1670
B Height – tines opened	mm	1100	1150	1100	1150	1350	1370	1400	1460	1350
C Diameter – tines closed	mm	1320	1320	1290	1280	1540	1540	1540	1560	1500
D Diameter – tines opened	mm	2000	2150	1940	2090	2260	2320	2410	2640	2190
E Ground clearance – tines opened	mm	540	590	540	580	600	620	640	710	600
F Pin diameter	mm	50		50		70				
G Tine width	mm	85		85		114				
H Distance over 2 tines	mm	1500	1610	1280	1370	1700	1740	1810	1970	1440
K Overall width	mm	–	–	1850	1900	–	–	–	–	2080

* Operating weight includes hydraulic rotator and excludes machine link



			GSH20B						GSH22B							
5 Tines			4 Tines			5 Tines			4 Tines				5 Tines			
500	600	800	600	800	1000	600	800	1000	600	800	1000	1250	600	800	1000	1250
15-21			20-30			20-30			22-50				22-50			
18-25			25-45			25-45			35-60				35-60			
1300	1320	1390	1500	1530	1570	1790	1800	1870	2240	2280	2300	2340	2660	2700	2740	2780
1380	1400	1480	1580	1620	1670	1880	1930	1990	2340	2400	2430	2470	2780	2860	2890	2950
1470	1500	1580	1710	1780	1880	1950	2030	2120	2520	2650	2730	2760	2880	3000	3040	3120
4000			8000			8000			8000				8000			
350			350			350			350				350			
100			150			150			200				200			
320			320			320			320				320			
40			40			40			40				40			
1700	1760	1890	1750	1890	2040	1750	1890	2040	1990	2120	2200	2260	1990	2120	2190	2260
1370	1400	1460	1470	1540	1620	1470	1540	1620	1720	1790	1840	1860	1740	1790	1830	1870
1500	1500	1500	1740	1730	1370	1700	1690	1700	2000	2040	2050	2070	1700	1900	1900	1940
2250	2340	2550	2390	2590	2860	2320	2510	2760	2630	2840	2940	3070	2320	2630	2730	2840
620	650	710	640	710	790	640	710	790	770	840	900	915	640	840	880	920
70			70			70			70				70			
114			114			114			114				144			
1480	1540	1670	1800	1930	2125	1530	1640	1800	2010	2160	2230	2320	1530	1840	1900	1980
2140	2220	2430	-	-	-	2200	2380	2620	-	-	-	-	2200	2630	2730	2840



GSH9B, GSH15B, GSH20B, GSH22B Orange Peel Grapples

Matching Guide

Orange Peel Grapples	Hydraulic Excavators	Material Handler
GSH9B	311C, 312C, 314C, M313C	
GSH15B	312C, 315C, 318C, 319C, 320C, 321C, M315C, M316C, M318C, M322C	320C MH, M318C MH, M322C MH
GSH20B	320C, 321C, 322C, 325C, M318C, M322C	325C MH, 330C MH, M322C MH, M325C MH
GSH22B	322C, 325C, 330C	330C MH, 345B/345C MH, M325C MH